

## THT LED

Ø 5mm cold-white

- high luminosity
- long lifetime up to 75'000 hours
- high quality for professional application
- RoHS compliant



Part Number	Old Part Number	Colour Temp. (°K)	Intensity (mcd)			Angle (deg)	Voltage (V)		Lens Colour	Type
			min	typ	max		typ	max		
SLO-234W-00001	L5-W50N-BVW	☉ 5500-9000	1610	2380	3220	65°	3.2	3.5	diffused	2
SLO-234W-00002	L5-W53N-BVW	☉ 5500-9000	5200	6150	10400	45°	3.2	3.5	waterclear	2
SLO-234W-00006	L5-W55N-BVW	☉ 5500-9000	22000	27000	44000	20°	3.2	3.5	waterclear	1

### Electro-Optical-Characteristics Ta=25°C, Forward Current: IF Typical = 20mA,

1/10 Duty Cycle, 10ms Pulse Width: up to 110mA, depending on type number.

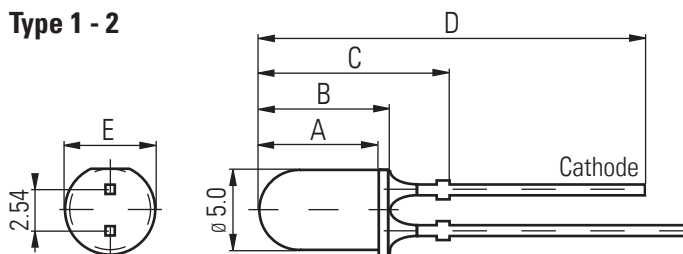
Storage Temp. -40 ~+100 (°C) Operating Temp. -30 ~+85 (°C)

Detailed data sheets are available on request

Packaging: 500pcs/bulk

### Dimensions (mm)

Type 1 - 2



Type	A	B	C	D	E
1	7.6	8.6	12.4	28.9	5.6
2	7.3	8.3	12.1	28.6	5.6